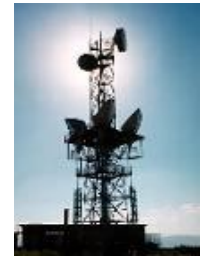


TelcoPrime has helped Fortune 500 companies get the most from low cost, high and medium capacity networks. We offer the complete spectrum of turnkey microwave design, installation and project management services. Our experience allows us to draw from multiple technologies and equipment vendors to tailor a solution that uniquely fits your needs.



Preliminary Design

TelcoPrime's preliminary design service helps to determine the feasibility of a microwave network. Our preliminary design process incorporates validating path profiles and path feasibility, as well as analyzing site inventory to locate potential sites. The preliminary design typically involves mapping all site options and determining potential microwave paths. The preliminary design can help us determine the most efficient use of all feasible paths using the customer's sites or any available site in the region.

Microwave Engineering

When it comes to RF Engineering, precision is vital. TelcoPrime Transmission engineers have performed thousands of path surveys throughout North America. Our teams will analyze the microwave path and identify all ranges of MW beam propagation characteristics, multipath, refractions, diffraction, and reflections. Antenna configurations and optimum placement are analyzed to ensure minimal propagation losses. When TelcoPrime conducts microwave path engineering and installation, the microwave reliability is guaranteed to pass performance specifications. Our customers can have confidence that their system is performing reliably year in and year out.

Project Management

At TelcoPrime we provide project management services for every project we undertake. In order to guarantee each project's success, we make an extra effort to work conscientiously with the client's team and other vendors. TelcoPrime project management services eliminate the pitfalls that can impact any project schedule.

Regulatory

TelcoPrime personnel know the details of FCC and regulatory issues. TelcoPrime provides spectrum management beyond the license application. Capturing difficult spectrum and securing it for future growth can be an advantage to meeting future capacity requirements for any carrier.

Installation

TelcoPrime personnel provide a complete installation package. Any given installation may require multiple components from various equipment vendors. Whether it's power equipment, multiplexing, radio or cutting edge IP equipment, TelcoPrime personnel have the experience to conduct the installation, integration and provide a full complement of testing to the specifications of both manufacturers and customers. TelcoPrime personnel carry certifications with all major equipment manufacturers.

Site Preparation

TelcoPrime provides a full complement of site preparation services that may be necessary for any microwave installation. The customer can maintain a single point of contact and have confidence that all of the details are being addressed.

Testing

TelcoPrime engineering teams prepare thorough test plans for new networks to assure full functionality and specification compliance of all equipment involved. We offer this as a part of our EF&I range of services. Additionally, TelcoPrime certified field personnel will conduct tests independently or in concert with your personnel. Our engineers are available to prepare a plan for troubleshooting and remedy of design faults, equipment failures and path irregularities. Our expertise and objectivity provides strength and credibility in resolving disputes with or among your vendors. Our EF&I services teams have been praised by telecom and data networking companies and TelcoPrime has a reputation as one of the most responsive services companies that they have worked with. This reputation has resulted in repeat business opportunities.



Procurement

In keeping with our EF&I strategy, the customer need not look elsewhere. TelcoPrime can provide all materials necessary to complete any project. We ensure that all materials are ordered, shipped and stored as necessary to support any project. TelcoPrime equipment pricing is extremely competitive because TelcoPrime is a channel partner with many major manufacturers.

Maintenance

TelcoPrime personnel are available for scheduled preventive maintenance or for on-demand problem resolution. We can train your personnel, provide contract staff of personnel or simply be your outsourced resource when the need arises. Our experience enables us to anticipate maintenance requirements, forecast spare inventory levels and design personnel and capital budgets.

