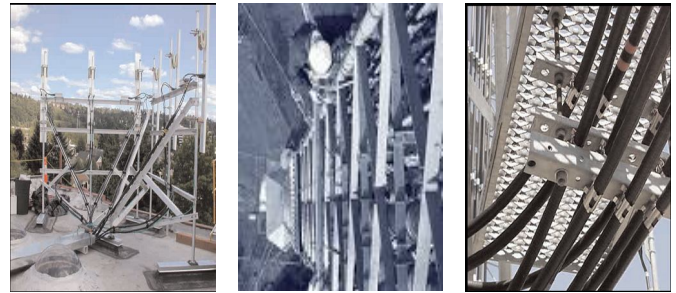


**T**elcoPrime understands that not all wireless networks are identical, and that each company that deploys those networks are unique. Although TelcoPrime is headquartered in Bellevue, Washington, home of many high-tech companies, we also deploy professionals throughout the United States with a wide range of wireless technology. TelcoPrime teams are experienced at working under all kinds of conditions to get systems up and running. We know how to design and build networks with a variety of constraints, and still get the job done.



What is your vision? At TelcoPrime we want to help our customers lead their industry by creating a network that securely serves every user, on any device, exactly as they need. Our personnel have an in-depth understanding of the relationships between functional groups because our site development teams have been trained alongside our engineering teams. If you use TelcoPrime's experts individually alongside your own engineers, or in a turnkey scenario with our engineering teams, we can meet your build objectives.

At TelcoPrime we guarantee that our customers have access to all progress and site information; whether it is site management, property management, documentation or configuration control.

### Partnerships

TelcoPrime believes in technology partnerships to provide focused solutions for our clients networking needs. We can work confidently as a prime contractor alongside other network component providers. Alternately we can act as the sole supplier, building turnkey solutions, or we can take on the simplest projects.



### Asset Management

Our customers need not look elsewhere. TelcoPrime can provide all materials necessary to complete any project. We ensure that all materials are ordered, shipped and stored as necessary to support any project. TelcoPrime equipment pricing is extremely competitive because we are channel partners with major manufacturers.



**Core Network Technologies**

- GSM, EDGE, GPRS, UMTS, CDMA, 1XRTT, EVDO, IDEN
- DWDM, SONET, ATM, MPLS, SS7, Sigtran, IP, Megaco/H.248
- MSS/MGW, Core Network, BSC, BTS, RNC, Node B, HLR
- 3G Circuit Switched Core Network, NSS Network
- WiFi (802.11), WiMAX
- WANs, MANs, VPNs, Fire-wall, Routers
- Microwave, Mesh, Satellite
- MMS, UMA, WAP Gateway

**Operating Philosophy**

TelcoPrime's operating philosophy is based on excellent service, honesty and respect for our clients' needs. Our values guide the way we manage our business and service our customers. At TelcoPrime our teams have years of experience in implementing complex network services that utilize next generation technologies. We are well versed in developing and deploying IP and operations-based services such as WiFi, VoIP and Microwave.

**Customer Solutions**

TelcoPrime highly values strategic partnerships, alliances, and professional affiliations. Our main objective is to develop solutions that really meet our customers' needs and remain true to industry standards. Each partner or alliance provides complementary knowledge, application or technology, which allows us to offer customers differentiating, easy-to-use, and highly reliable communication solutions.

TelcoPrime has teamed with technology and channel partners to deliver and fully integrate end-to-end solutions to wireless network operators.



TelcoPrime's extensive background both as an integrator and consumer of networking technology makes it possible to offer expert consulting support for a broad range of applications.

**A major wireless carrier in North America engages TelcoPrime to deploy UMTS backhaul across multiple states.**

*"TelcoPrime adjusted to our needs when other companies could not." - Director of Transport*

